



MV Thiara [+1940]

Details

general

nationality: [british](#)
 purpose: [transport](#)
 type: [tanker](#)
 propulsion: [motor vessel](#)
 date built: [1939](#)
 status: [live](#) **++**

details

weight (tons): [10364 grt](#)
 dimensions: [99,14 x 19,57 x 9,01 m](#)
 engine: [Oil engine](#)
 power: [628 n.h.p.](#)
 speed: [12 knots](#)

about the loss

cause lost: [torpedo](#)
 date lost: [27/07/1940](#) [dd/mm/yyyy]
 casualties:

about people

builder:  [Swan, Hunter & Wigham Richardson Ltd., Newcastle-Upon-Tyne](#)

owner:  [Anglo-Saxon Petroleum Co. Ltd., London](#)

captain:

about the wreck

depth: [1300 max. / -- min. \(m\)](#)

orientation:

protected:

war grave:

updates

entered by: [Allen Tony](#)
 entered: [28/08/2006](#)
 last update: [Allen Tony](#)
 last update: [26/07/2009](#)

Position

[more positions](#)

[Allen Tony](#) 26/06/2007

latitude: [56°37'0X" N](#)
 longitude: [017°56'0X" W](#)
 system: [WGS84](#)
 division: [1'=60"](#)

 [add position to my marks](#)

show neighbour: wrecks: [members only](#)

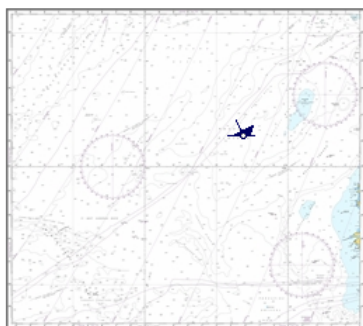
[check AIS](#)

[insert new position](#)

The Wreck today

[insert wrecksite info](#)

Pictures



[Letzens Jan](#) 22/10/2009

[Western Approaches British Isles](#)

This is a thumbnail version of the chart **Western Approaches British Isles**. You do not have sufficient rights to see this chart in full resolution [8421x7450 pixels]. Click [this link](#) to subscribe to this service.



[insert new picture](#)

History

[Allen Tony](#) 26/06/2007

Thiara was a British Motor Tanker of 10,364 tons and built in 1939 by Swan, Hunter & Wigham Richardson Ltd, Wallsend. She was owned by Anglo-Saxon Petroleum Co Ltd 'Shell Oil', London. On the 27th July 1940 when on route from Falmouth and Milford Haven to Curacao she was torpedoed by U-34 and sunk. At the time of her sinking she was in ballast and in convoy OB-188 (comprised 37 ships). She was also carrying 4 passengers.

25 were killed and there were 36 survivors who were rescued by the British destroyer HMS Winchelsea (F.40) (Lt-Cdr W.A.F. Hawkins) and landed at Liverpool. Technical Details :tanker - motor - single screw 10,364 GRT - 15,150 DWT 325'4" x 64'3" x 29'7" Service speed 13.0 knots

[insert new history](#)

Documents

[insert new document](#)

About Builder(s)



[Swan, Hunter & Wigham Richardson Ltd., Newcastle-Upon-Tyne](#)

From: Janes Fighting Ships 1919
 SWAN, HUNTER & WIGHAM RICHARDSON, LTD. (WALLESEND-ON-TYNE), Twenty-one building berths, fifteen of which are served by overhead electric cranes. Four berths covered in.
 Employees : about 8000. Annual gross shipbuilding capacity (1918) : 150,000 tons.
 Engine works : 100,000 H.P. output per year. The dry docks dept, includes a large repairing yard with two graving docks and two floating docks.
 Engine works have developed the Neptune and Polar marine oil engines. Total area of works : 78 acres. Water frontage : 4000 ft. Shipyard also at Southwick-on-Wear, with three building berths.
 Allied firms are the Wallsend Slipway & Engineering Co., Ltd., Wallsend ; Barclay, Curle & Co., Ltd., of Whiteinch, Govan. Elderslie and Glasgow.



LAT: 50°39,0XXN LON: 25°44,3XXW

